



CornerstoneMFT

Clustering/Load Balancing Support Quick Start Guide

January 2010

Notices

Thank you for purchasing Cornerstone MFT®.

Information in this document is subject to change without notice. The software described in this document is furnished under a license agreement, OEM, or reseller agreement. The software may be used or copied only in accordance with the terms of those agreements. No part of this publication may be reproduced, stored in a retrieval system, or transmitted in any form or any means electronic or mechanical, including photocopying and recording for any purpose other than the purchaser's personal use without the written permission of South River Technologies, Inc.

South River Technologies, Titan FTP Server, Cornerstone MFT, WebDrive, DMZedge, and GroupDrive are registered trademarks of South River Technologies, Inc. in the U.S. and other countries. Microsoft, Windows, Windows NT, Windows XP and Windows Vista are registered trademarks of Microsoft Corporation, Inc. The names of other actual companies and products mentioned herein may be the trademarks of their respective owners. Any information in this document about compatible products or services should not be construed in any way to suggest SRT endorsement of that product or service.

South River Technologies, Inc.
2635 Riva Road
Suite 100
Annapolis, Maryland 21401
USA
Telephone: 410-266-0667
Fax: 410-266-1191
www.southernrivertech.com

The following instructions will help you to set up Cornerstone MFT for clustering/load balancing support. If you need additional assistance, the [Cornerstone MFT User Guide](#) is available on line. In addition, a listing of Frequently Asked Questions (FAQ) is available at our [Knowledgebase Support Center](#).

Table of Contents

Notices	ii
Table of Contents	iii
Cornerstone MFT Clustering/Load Balancing Overview	4
Step 1: Create your Database, Security Login, and User Login for Database	5
Step 2: Create your Data Source on your Primary Cornerstone Server	7
Step 3: Create your Primary Cornerstone Server	11
Step 4: Create your Member/Secondary Clustered Server	14

Cornerstone MFT Clustering/Load Balancing Overview

Cornerstone MFT, when used in conjunction with an ODBC Database and an Advanced User Authentication Engine, can be scaled to handle an unlimited number of users. Cornerstone includes an option during the *New Server Wizard* process to create or connect to an existing Clustered Cornerstone Server.

Key steps to building a Clustered Cornerstone Server are:

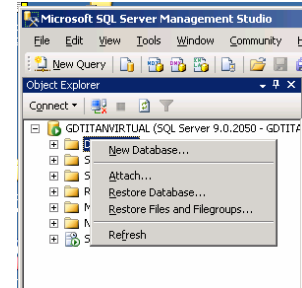
- Create your database for ODBC connectivity.
- When creating the primary/first server of the cluster, choose to store the Server Configuration information in an *ODBC database*, not in the system registry. Storing the configuration information in an ODBC database will ensure that other members of the cluster will have access to the same server configuration.
- Use a UNC for data directories and log files. For more information, see our quick start guide for [UNC Data Storage and scalability](#).
- Install Cornerstone on the other member machines and run the *New Server Wizard*.
- Choose to create a Member Server of the cluster, which will allow you to tie in to the existing configuration.

Once the multiple servers have been configured, they will all share the same server, user, and group configuration settings. **Please Note:** Using a Load Balancing Utility, such as Microsoft Load Balancing, will allow the load to be balanced across multiple servers. Once the multiple servers have been configured, they will all share the same server, user, and group configuration settings.

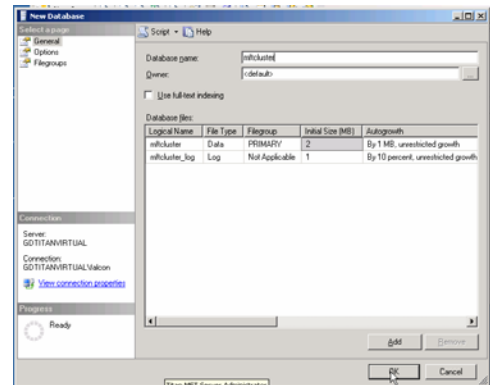
Step 1: Create your Database, Security Login, and User Login for Database

These instructions assume you are using SQL Server 2005, please refer to instructions relative to your particular database program if you are not using SQL2005.

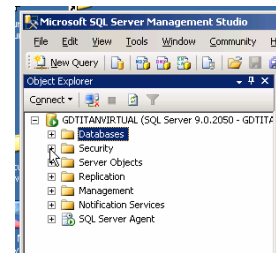
1. Run the *MS SQL Server Management Studio*. Right-click on **Database** and then click **New Database**.



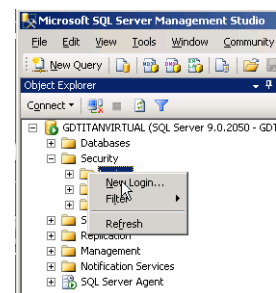
2. Give your database a name and then click **OK**.



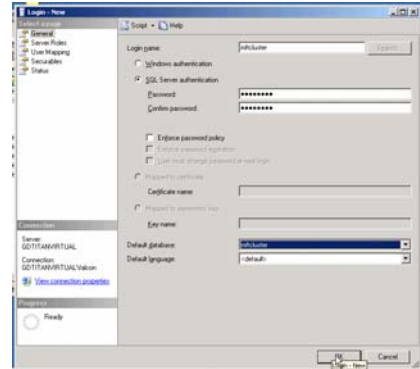
3. Expand **Security**>**Logins**.



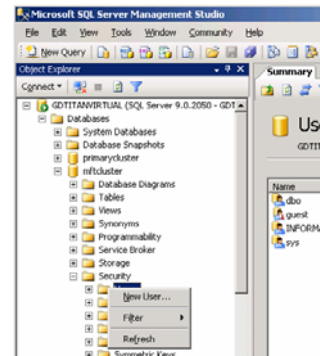
4. Right-click to display the context menu and then click **New Login**.



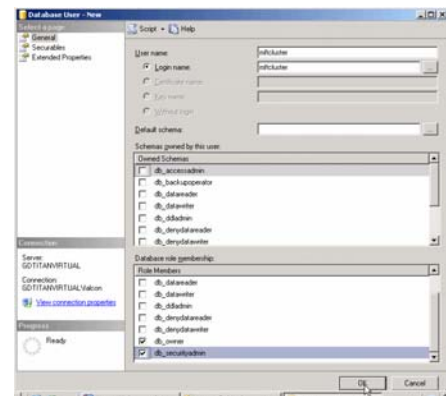
5. Type the **Login name**. Use the radio button to select **SQL Server authentication**. Clear **Enforce password policy** and then click the drop down menu to choose the database for login.



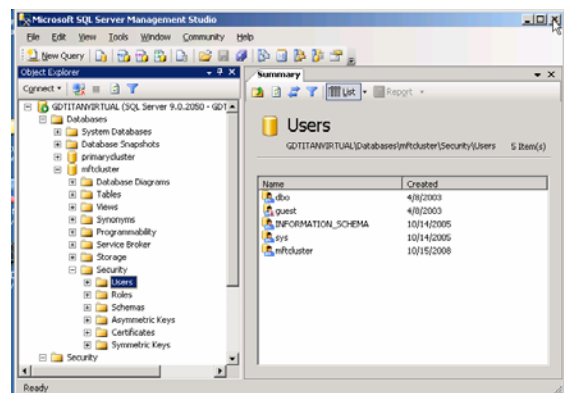
6. Expand your newly created database, expand **Security** under your database, and then right-click **New User** to create your new user.



7. Type the **User Name** and click the **Browse** button to browse to the Login name that you created. Select the Database role memberships: **db_owner** and **db_securityadmin**, and then click **OK**.



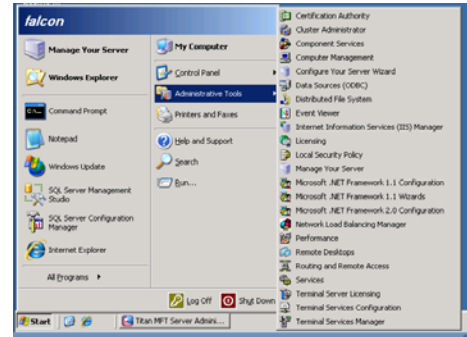
8. Close the *MS SQL Server Management Studio*.



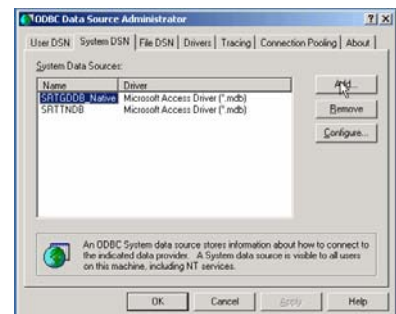
Step 2: Create your Data Source on your Primary Cornerstone Server

Use the following steps to create your data source on the primary Cornerstone Server, which will connect to your SQL database. You will repeat this process when you create your secondary/member server.

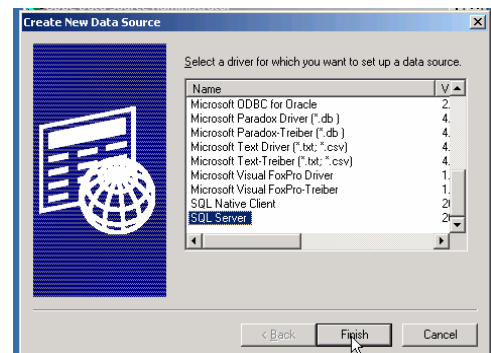
1. Click **Start>Administrative Tools>Data Sources (ODBC)**.



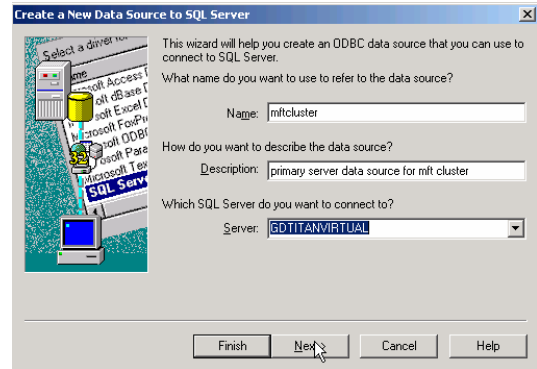
2. Click the **System DSN** tab and then click **Add**.



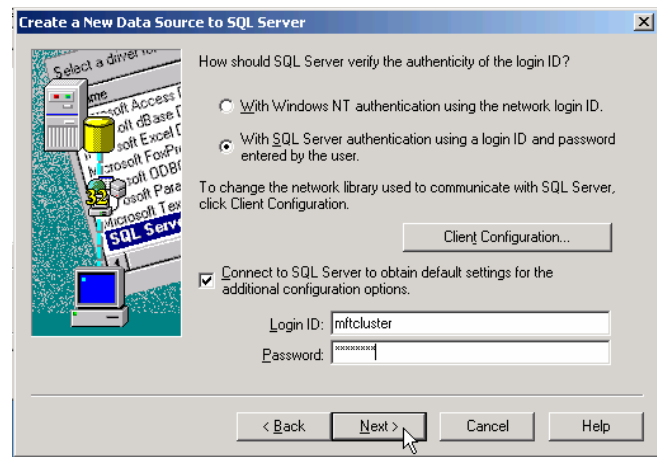
3. Select **SQL Server** and click **Finish**.



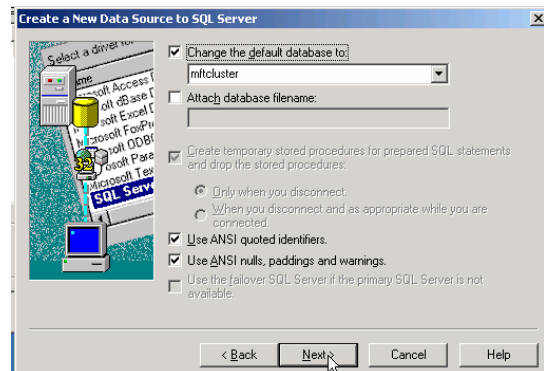
4. Type the data source name and a description. Type the SQL Server name and then click Next. **NOTE: Do not** press Enter or click Finish or you will get a silent fail when you create your server cluster.



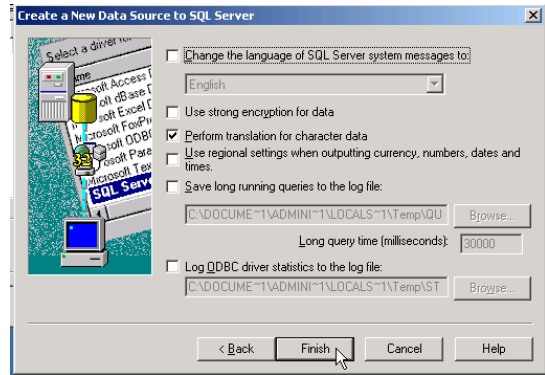
5. Click **With SQL Server authentication using a login ID and password entered by the user**. Type your SQL **Login ID** and **Password** and then click **Next**.



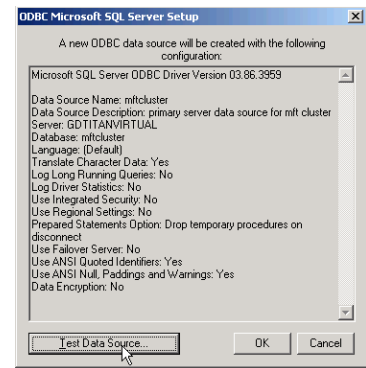
6. Select **Change the default database to** and use the drop-down arrow to choose your newly created database. Click **Next**.



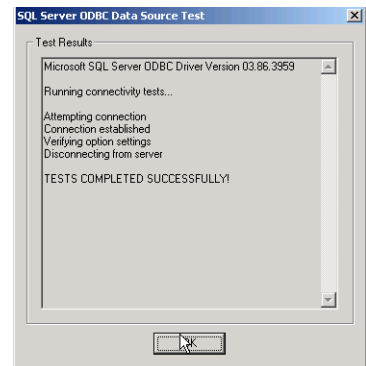
7. Click **Finish**.



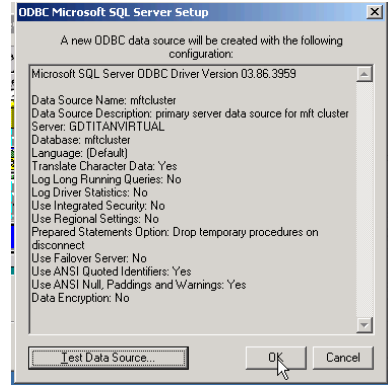
8. Click **Test Data Source**.



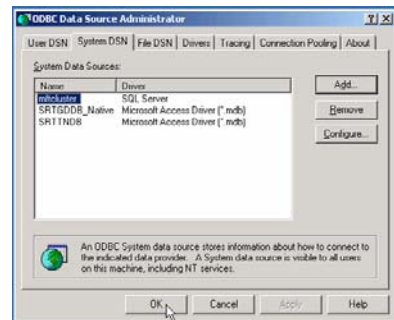
9. If the test is successful, Click **OK**. Please Note: If the test does not complete successfully, begin by creating a new data source.



10. Once your test is successful, click **OK**.

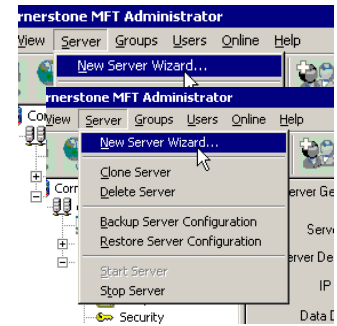


Click **OK** to finish creating your data source.

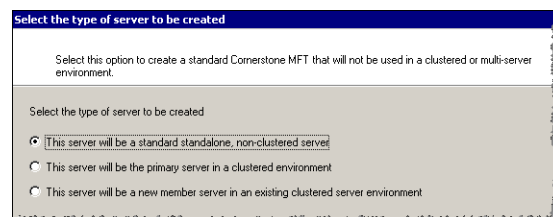


Step 3: Create your Primary Cornerstone Server

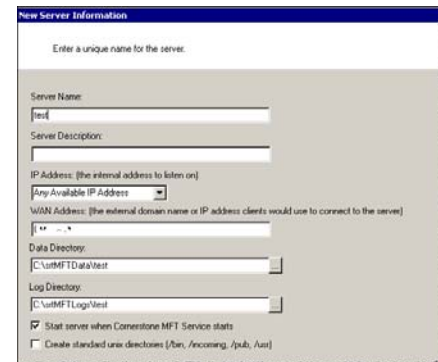
1. Run the Cornerstone Administration utility and start the New Server Wizard. When the *Administer Domain* window appears, Type the **Administrator Username** and **Administrator Password** and click **OK**.



2. Select the Server Type and click Next.

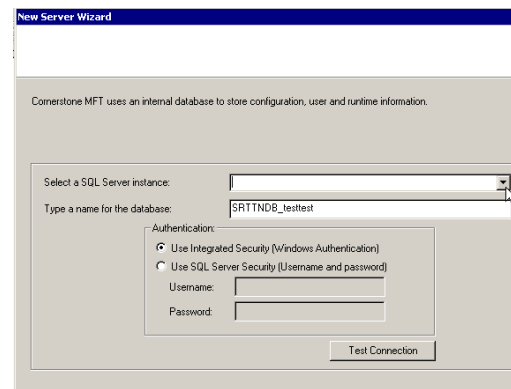


3. Type a unique Server Name. Click the drop-down arrow to choose your IP Address. (Any available IP address indicates that the server will listen on all IP addresses that are configured on the PC along with the local IP address of 127.0.0.0, also known as localhost.) Type the WAN address. You do not need to type "http", for example, "myserver.com". Select the check box to start this server when Cornerstone MFT starts. When you are finished, click Next.*

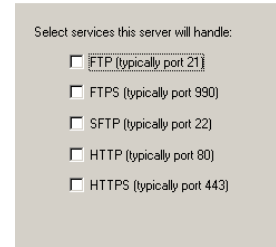


*If you need to create standard UNIX directories you can find additional information in the [Cornerstone MFT User's Guide](#).

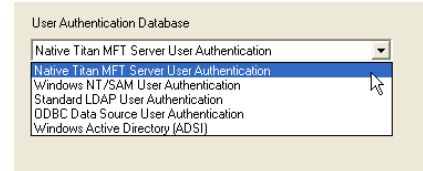
4. Cornerstone uses an internal database to store configuration, user, and runtime information. Use the drop-down arrow to select a SQL Server instance. Type a name for this database. Select Windows Authentication or SQL Server Security, and then click Test Connection. Once you connect successfully, click Next.



5. Select the Services that this server will handle.

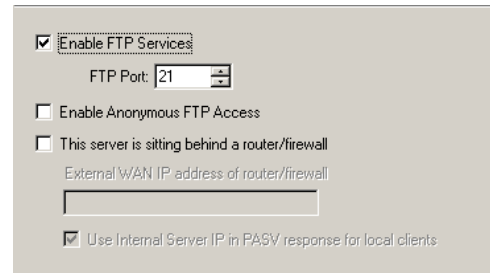


6. Select your User Authentication Database using the drop-down arrow. After you have configured your User Authentication Database, click Next.*



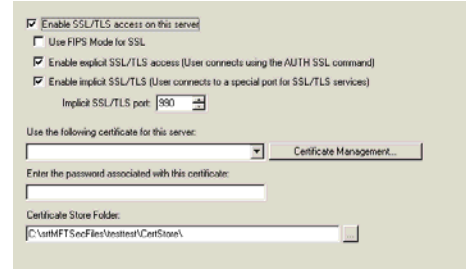
*Once you select a User Authentication Database in Cornerstone, you cannot change to a different method after the server wizard has completed. If you need more information about configuring user authentication, please see the [Cornerstone MFT User's Guide](#) or the [SRT User Authentication Quick Start Guide](#) for your specific user authentication database.

7. If you wish to enable FTP Services select the Enable FTP Services check box. Select the FTP Port number by using the up/down arrows. To enable anonymous FTP access, select the check box. If your server is sitting behind a router/firewall select this check box and type the external WAN address of the router/firewall. You do not need to type "http", for example, mywanaddress.com. When you are finished with FTP Services options* click Next.



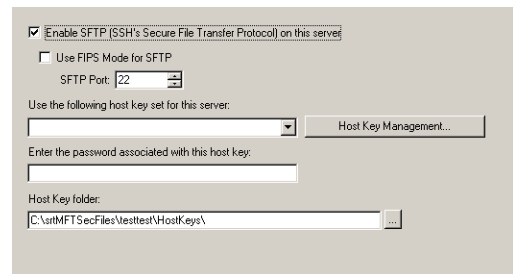
*For more detailed information pertaining to these configuration options see the [Cornerstone MFT User's Guide](#).

8. To enable SSL/TLS access on this server select this check box and choose the appropriate sub-option. Click the drop-down arrow to choose the certificate. Click Certificate Management to configure a certificate for this server. Enter the password associated with the certificate. Use the "..." button to browse to the Certificate Store Folder. When you are finished configuring SSL/FTPS Security Settings,* click Next.

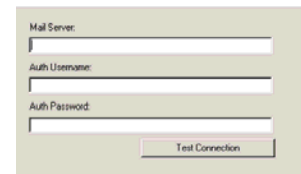


*For more detailed information pertaining to these configuration options see the [Cornerstone MFT User's Guide](#).

9. To enable SFTP (SSH's Secure File Transfer Protocol) on this server select the check box and choose the SFTP port (default port 22) using the up/down arrows. Choose the host key set by using the drop-down arrow. Click Host Key Management for host key configuration options. Type the password associated with the host key. Click the browse "..." button to browse to the Host Key folder. For more detailed information pertaining to these configuration options, see the [Cornerstone MFT User's Guide](#). Click Next when you are finished configuring SSH/SFTP Security Settings.



10. Type the URL or IP address of the SMTP mail server that will be used to send email notifications to users. You may test the connection by clicking Test Connection. (For more detailed information pertaining to these configuration options see the [Cornerstone MFT User's Guide](#).) When you are finished click Next.



11. Click Finish to create the server.



11. Create a test user on your primary server using the *New User Wizard*. **Note:** You should see this test user after you create your member server.

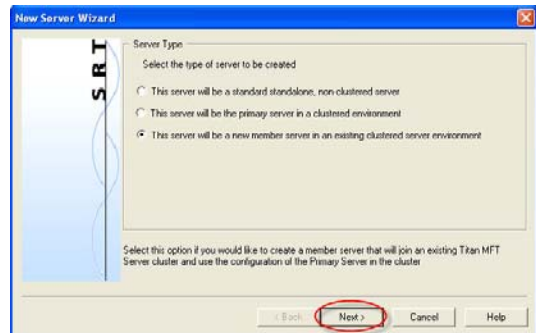
Step 4: Create your Member/Secondary Clustered Server

To create your secondary cluster/member server repeat the process, as outlined above, on your secondary/member server with the exception of making this server a member server.

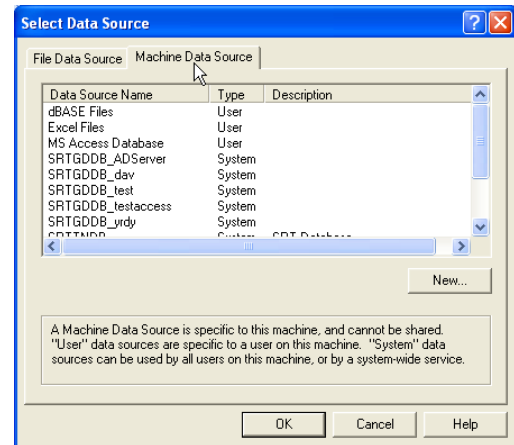
Note: You must point to the data source that you just created instead of creating a new data source.

1. Expand your secondary server domain, right-click and select **New Server Wizard**.

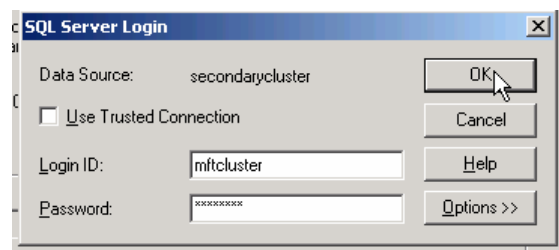
2. Select the **This server will be a new member server in an existing clustered server environment** radio button. Click **Next**.



3. Click **Machine Data Source** and highlight the data source that created for your primary cluster server. Click **OK**.



4. Type your **SQL Login ID** and **Password**.



5. Check your parameters and click **Test**. Click **OK** if successful and then click Next.
6. Highlight your **primary server** and click **Next**. Click **Next** again, and then click **Finish**.
7. Make sure that your **primary Cornerstone server** is running and then start your secondary/member server. Expand **Users** and make sure that the test user that you created on your primary server appears.

If your user appears, you have successfully created a Cornerstone MFT cluster. You can use a NLB (Network Load Balancing) Server on the front end of this cluster if you wish to use Load Balancing.

About South River Technologies

South River Technologies (SRT) is an innovator in managed file transfer and basic content services software. SRT's software seamlessly integrates access to remote files into the desktop applications that users rely on, creating an instantly familiar interface for collaborating, sharing, and accessing files. SRT's enterprise class server products are built using industry standard encryption, highly granular security configuration controls, and technologies to reduce the risk of network intrusions. Over 60,000 customers, including more than 70 colleges and universities, government agencies such as NASA and FAA, and other blue chip companies in more than 110 countries rely on SRT's software to make remote file access and collaboration more efficient for their customers, partners, and distributed workforce. For more information, please visit www.southernrivertech.com.

Cornerstone MFT® is a registered trademark of South River Technologies, Inc.

© Copyright South River Technologies, 1996-2010. All rights reserved.